



# Full Subject-Based Banding (Full SBB)

# What is Full Subject-Based Banding?

- Full Subject-Based Banding (Full SBB) is part of MOE's ongoing efforts to **nurture the joy of learning** and **develop multiple pathways** to cater to the different strengths and interests of our students.
- With Full SBB, we are moving towards a secondary school education where **students learn each subject at the level that best caters to their overall strengths, interests and learning needs.**

# Rationale of Full SBB

Full SBB aims for students to:



Have **greater ownership of their learning** according to their strengths, interests, abilities, talents and learning needs



Develop a **growth mindset and an intrinsic motivation** to learn for life



Have **more opportunities to interact with friends** of different strengths, interests, abilities and talents

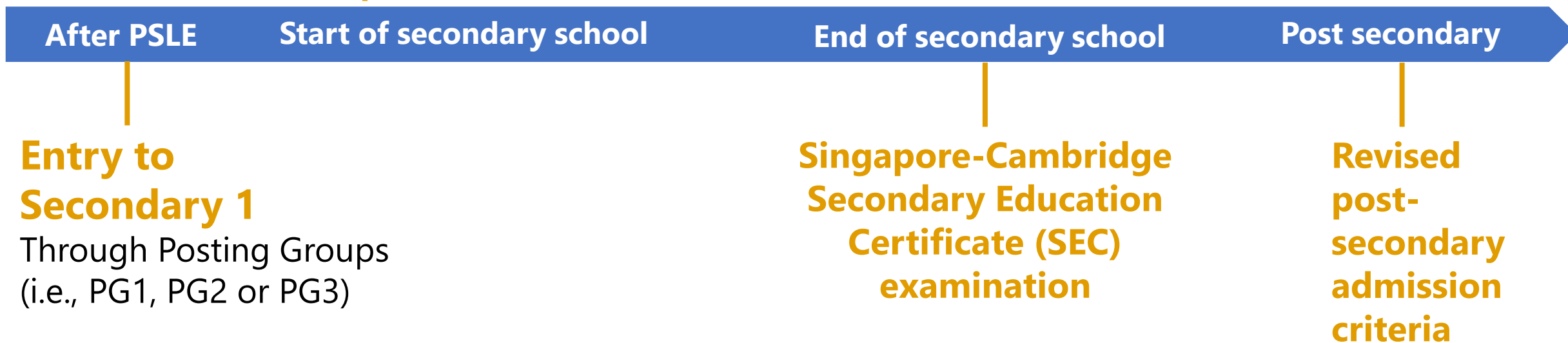


Have **more options for post-secondary pathways**, while ensuring they have strong fundamentals and can thrive in their chosen pathway

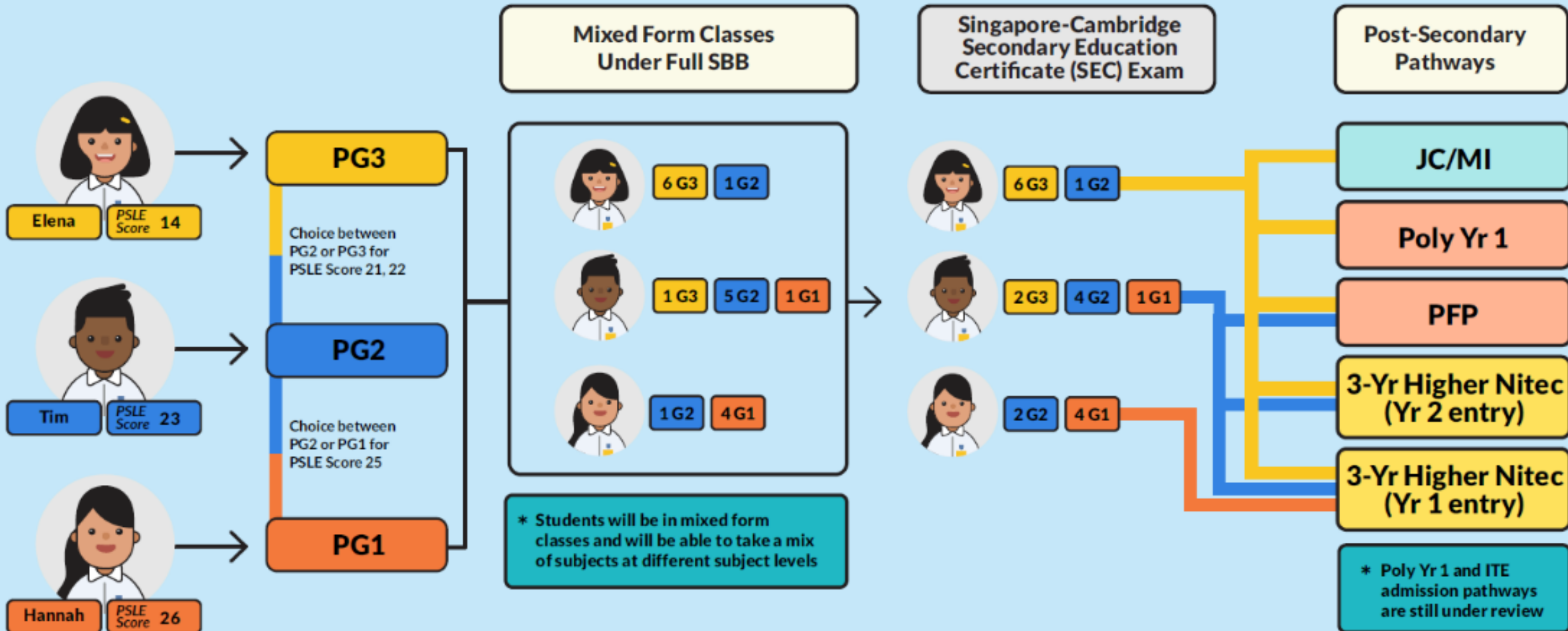
# Secondary school experience under Full SBB

## Secondary school experience

1. Mixed form classes upon entering secondary school
2. Common curriculum subjects at lower secondary
3. Subjects to be offered at G1, G2 or G3, mapped from the standards of the N(T), N(A) and Express subject levels respectively
4. Greater flexibility to offer subjects at various subject levels
5. Shift away from stream-based subject offerings

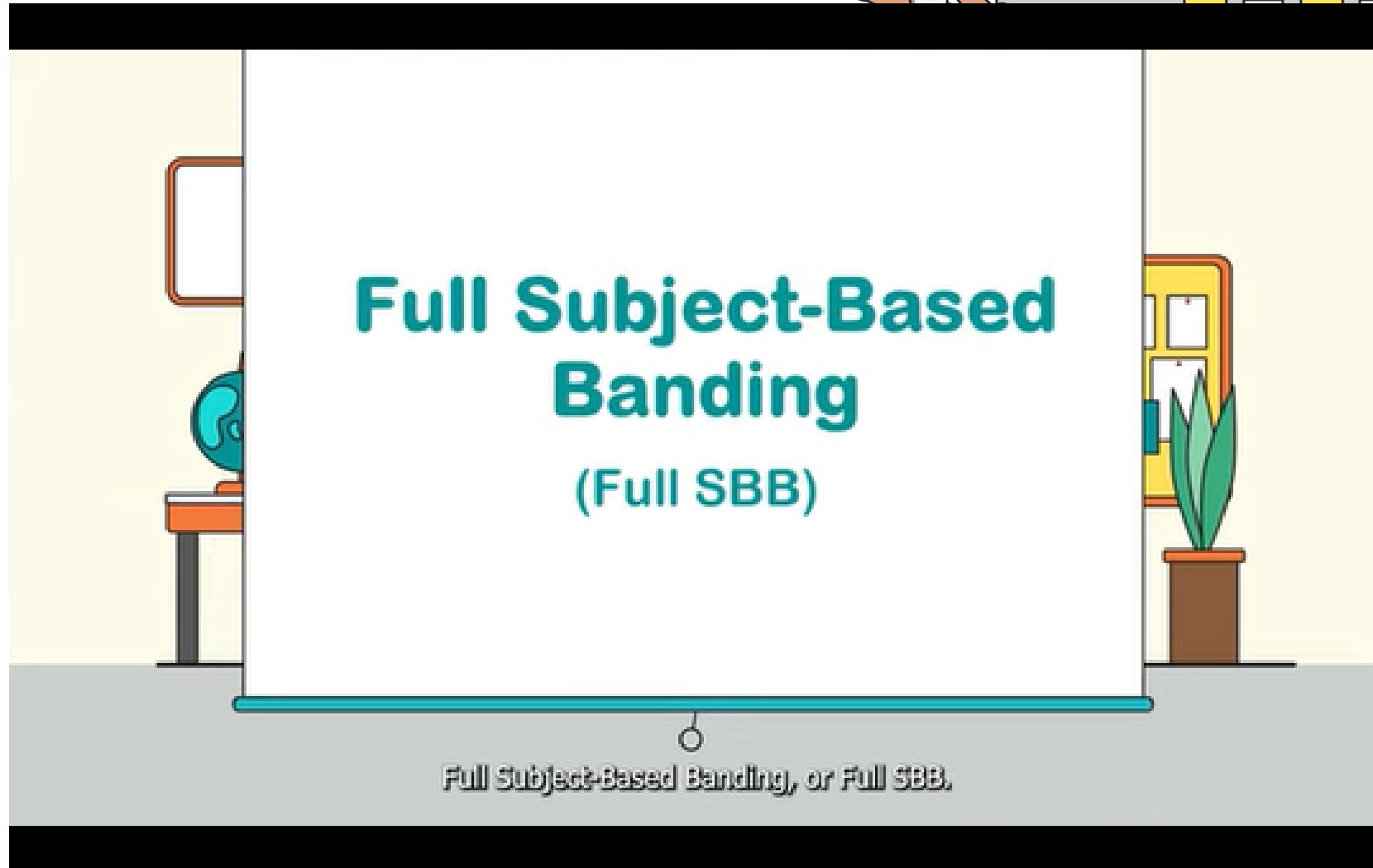
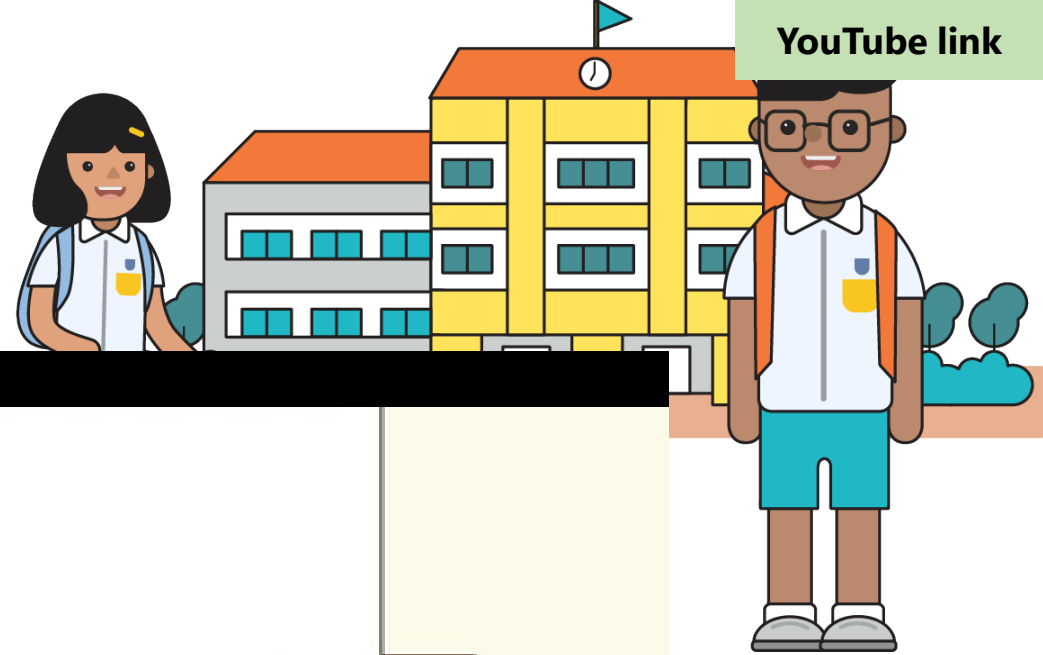


# Example: Secondary school experience under Full SBB



# YouTube video: Secondary school experience under Full SBB

YouTube link



Full Subject-Based Banding, or Full SBB.



# **Supporting your child through their Secondary School Journey**

# How can you support your child?

- **Learn more about their strengths, skills, interests, learning styles and aspirations.**
- **Encourage your child to be open and think about possible education and career opportunities.**
  - There are many post-secondary education options for students to explore. Find one that best suit their strengths, skills, interests and learning styles.



# How can you support your child?

**Support**

**Affirm**

**Familiarise**

**Empathise**

# How can you support your child?

- Here's how you can journey with your child:
  - **Connect with them**
    - Set aside time to listen and understand how they are coping with school and CCA, their thoughts and feelings.
    - Create opportunities outside of school that would help you and your child recognise their interests, skills, strengths and learning styles.
  - **Support them to learn for life**
    - Stay open to the possible education and career pathways that are available and be flexible in discussing these pathways with them.
    - Trust their abilities to grow to become better versions of themselves, while being careful not to project your expectations on them.
    - Encourage them to take ownership of their goals and plans.

# Resources

## Parent Kit – Supporting Your Teen in Exploring Post-Secondary Pathways



<https://go.gov.sg/moe-post-secondary-2022>

## Video – Heart to Heart Talk



<https://go.gov.sg/h2hstep2>

## ECG Tips for Parents



<https://go.gov.sg/tips-for-parents>



**Find out more about Full SBB**

# Visit the Full SBB Microsite

<https://go.gov.sg/moe-fsbb>



## What is Full SBB?

Full SBB is part of MOE's ongoing efforts to nurture the joy of learning and develop multiple pathways to cater to the different strengths and interests of our students.



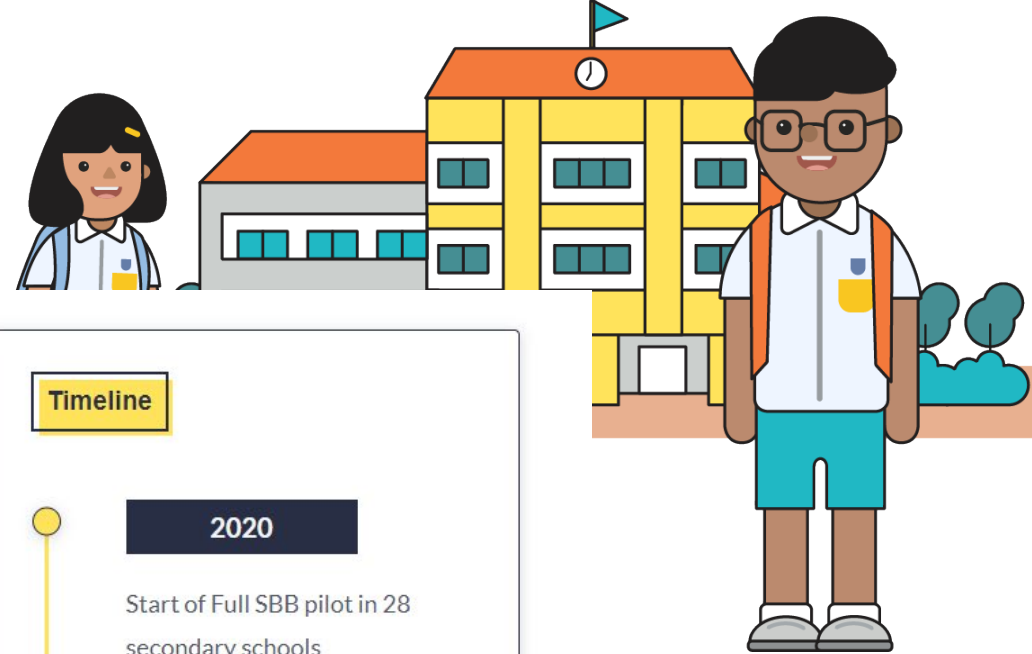
## Secondary school experience under Full SBB

Find out more about Secondary 1 postings, form classes, subject offerings, Common Curriculum and other changes under Full SBB.



## FAQ

Read this list of commonly asked questions and answers on Full SBB.



## Timeline

2020

Start of Full SBB pilot in 28 secondary schools

2021

First cohort of Primary 6 students undergo new PSLE scoring and Secondary 1 (S1) posting system

2022-2024

Progressive roll-out of Full SBB to more secondary schools

2027

# Find out more about Full SBB

## Microsite



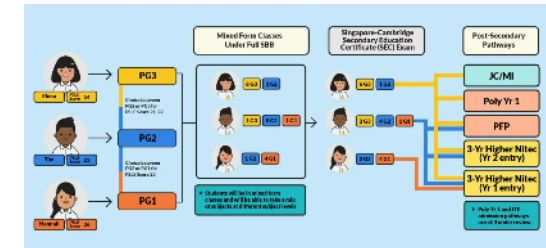
<https://go.gov.sg/moe-fsbb>

## Interactive Site



<https://go.gov.sg/my-fsbb-path>

## Infographic (updated Feb 2023)



<https://go.gov.sg/fsbb-pathways>

# Find out more about Full SBB

## MOE Explainer Video



<https://go.gov.sg/moe-fsbb-explainer>

## CNA Singapore Tonight Video



<https://go.gov.sg/cna-fsbb>



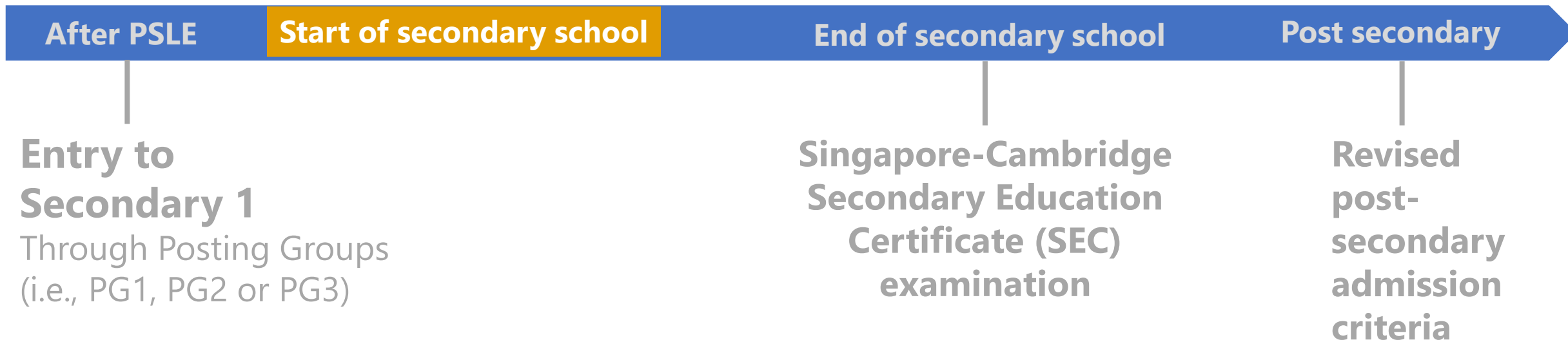
**For Secondary 1 Parents**



# Secondary school experience under Full SBB

## Secondary school experience

1. Mixed form classes upon entering secondary school
2. Common curriculum subjects at lower secondary
3. Subjects to be offered at G1, G2 or G3, mapped from the standards of the N(T), N(A) and Express subject levels respectively
4. Greater flexibility to offer subjects at various subject levels
5. Shift away from stream-based subject offerings



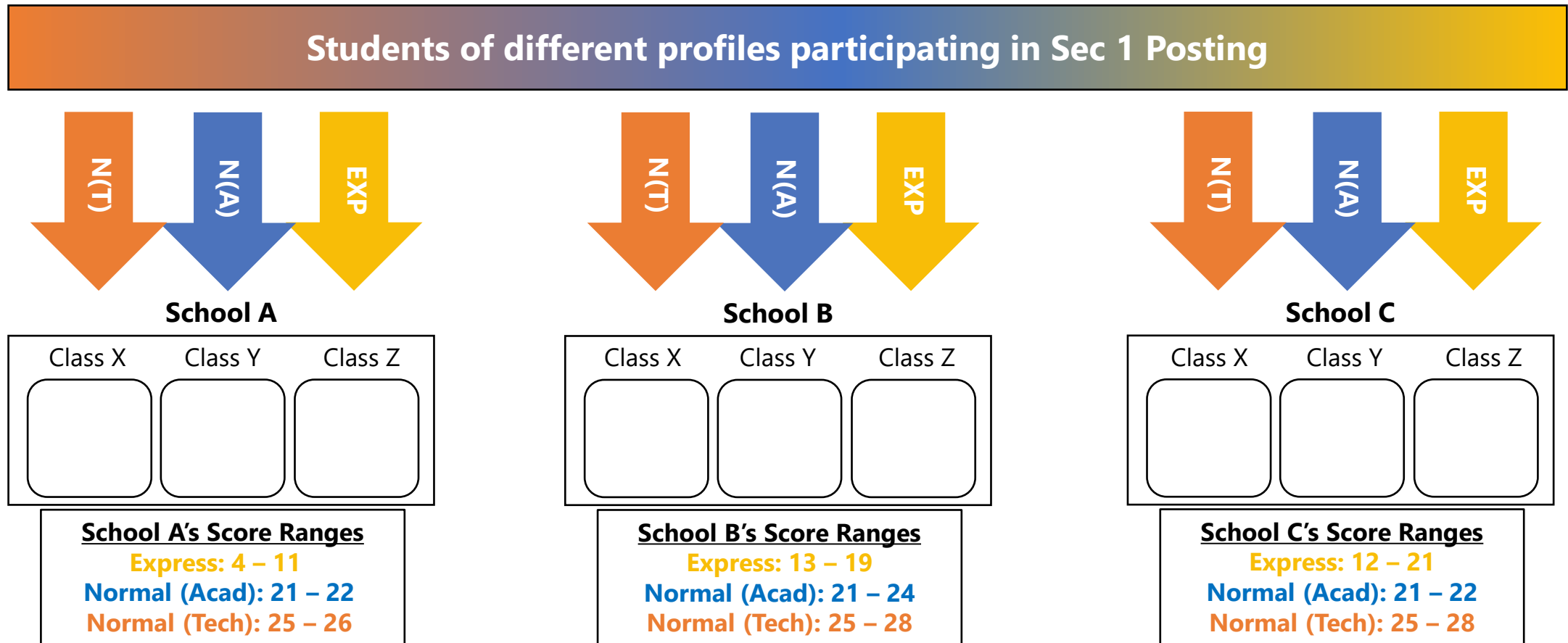
# Posting Groups and Subject Levels

- Students will be posted to Secondary 1 through **three Posting Groups – Posting Group 1, 2, and 3.**
- **Posting Groups will only be used for:**
  - Facilitating entry into secondary school.
  - Guiding the subject levels students offer at the start of Secondary 1.
    - They do not define students' identities, nor influence learning experiences and access to post-secondary pathways.

PSLE Score	Posting Groups	Indicative level of most subjects at start of Secondary 1
4 – 20	PG3	G3
21 and 22	PG2 or PG3	G2 or G3
23 and 24	PG2	G2
25	PG1 or PG2	G1 or G2
26 – 30 (with AL 7 in EL and MA)	PG1	G1

# Mixed Form Classes in Lower Secondary

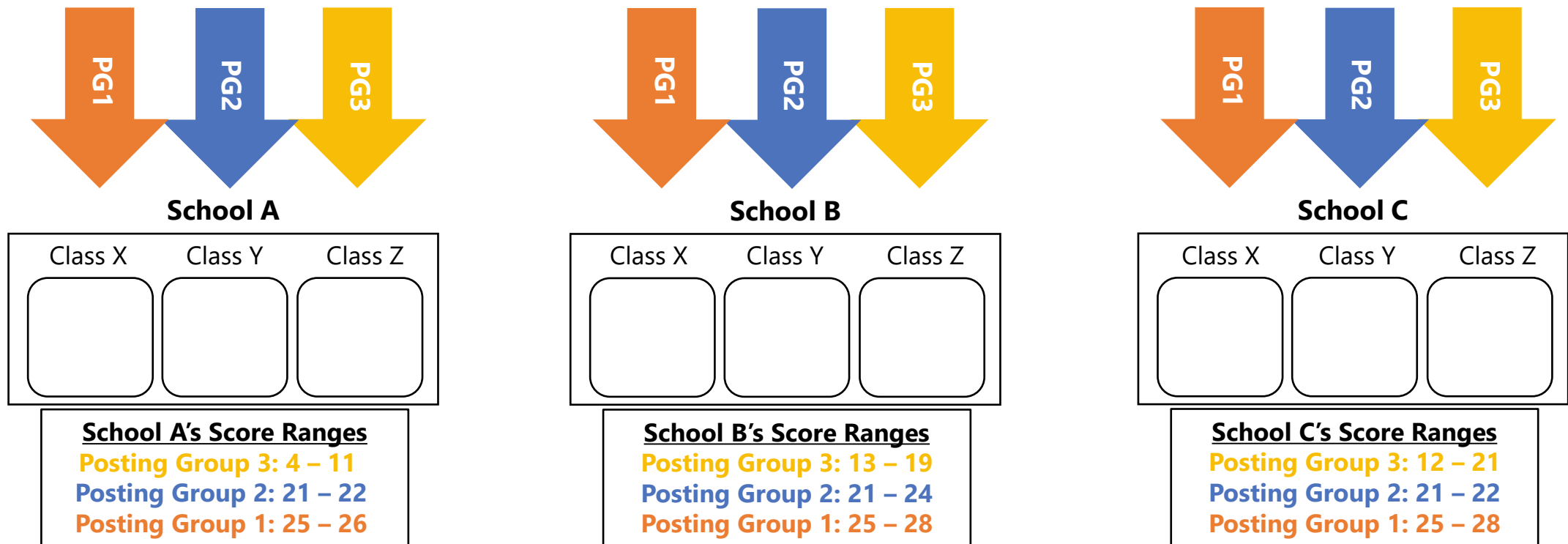
- Prior to Full SBB implementation, students are arranged in stream-based form classes and interact with peers of similar profiles.



# Mixed Form Classes in Lower Secondary

- With Full SBB, students will be placed in mixed form classes in lower secondary.
- More opportunities for students to interact with other students of different strengths.

Students of different profiles participating in Sec 1 Posting



# Mixed Form Classes in Lower Secondary

- Teachers in Full SBB Pilot schools observed an increase in students' interactions with peers from different streams and positive outcomes arising from these interactions.



*"It was a new experience for me to stand in front of the class and lead, but I enjoyed it as my Form Teachers and classmates were very supportive. **Because everyone in the class is different, I learnt the importance of communicating with everyone respectfully. I think I have also grown to be braver and more outspoken in the process.**"*

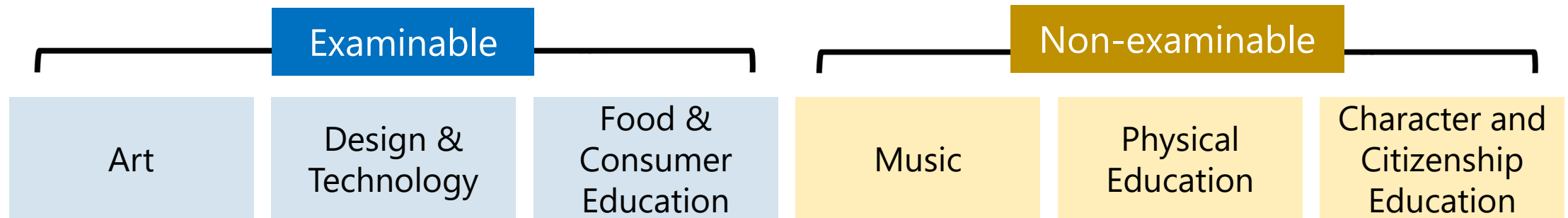
- Hazim, when he was in Sec 1



Hazim, when he was in Sec 3

# Common Curriculum Subjects

- Students will take six common curriculum subjects with their form class classmates:



- These subjects take up approximately one-third of curriculum time, giving students time to interact with classmates of different strengths and interests.

# Common Curriculum Subjects



*"I feel that **Full SBB** has helped me make new friends of **diverse backgrounds**. It has also provided me the opportunity to **communicate and work with different people** and overall it is a very fun experience."*

- Jerell Neo, when he was in Sec 1

# Subject Levels under Full SBB

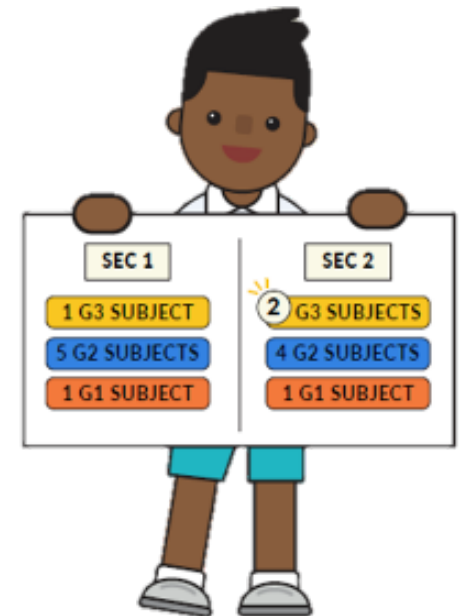
- Students can offer different subjects at different subject levels (i.e., G1, G2 or G3) according to their strengths, interests and learning needs, throughout their secondary school journey.
- These subject levels, G1, G2 or G3, are mapped from the standards of N(T), N(A) and Express subject levels respectively.



# Subject Levels under Full SBB

- Students are required to take compulsory subjects at G1, G2 or G3.
- Subject level at the start of Secondary 1 is based on their PSLE Score and indicated by Posting Groups.

PSLE Score	Posting Groups	Indicative level for most subjects at start of Secondary 1
4 – 20	PG3	G3
21 and 22	PG2 or PG3	G2 or G3
23 and 24	PG2	G2
25	PG1 or PG2	G1 or G2
26 – 30 (with AL 7 in EL and MA)	PG1	G1



# Offering Subjects at More Demanding Levels



- For **English Language, Mother Tongue Languages, Mathematics and/or Science**, students can offer them at the start of Secondary 1 at a more demanding level if they meet the eligibility criteria.

<b>Eligibility criteria for <u>English Language, Mathematics, Science, Mother Tongue Languages</u></b>			
<b>Posting Group</b>	<b>PSLE Standard grade</b>	<b>PSLE Foundation grade</b>	<b>Option to offer subject at</b>
PG2	AL 5 or better	-	G3
PG1	AL 5 or better	-	G2 / G3
	AL 6	AL A	G2

- Students can offer **Humanities subjects** at a more demanding level from Secondary 2 onwards, based on their results in Secondary 1.

# Offering Subjects at Less Demanding Levels



- Eligible students may offer some subjects at a less demanding level from Secondary 1.
- Students who offer subjects at a less demanding level may subsequently offer the subject at a more demanding level as they gain greater competence and confidence in the subject.

# Offering Subjects at Less Demanding Levels

- Students can offer to take subjects at a less demanding level based on the following considerations:

## Mother Tongue Languages:

Indicative level of most subjects at start of Secondary 1	PSLE Grade (Standard Mother Tongue Language)	PSLE Grade (Foundation Mother Tongue Language)	Option to offer at
G3	AL 6	AL A	G2
	AL 7-8	AL B-C	G1 or G2
G2	AL 7-8	AL B-C	G1

## English Language, Mathematics and/or Science:

Indicative level of most subjects at start of Secondary 1	PSLE subject level for English Language, Mathematics and/or Science	Option to offer at
G3	Foundation level	G2

# Subject Level Flexibility Throughout Secondary Education

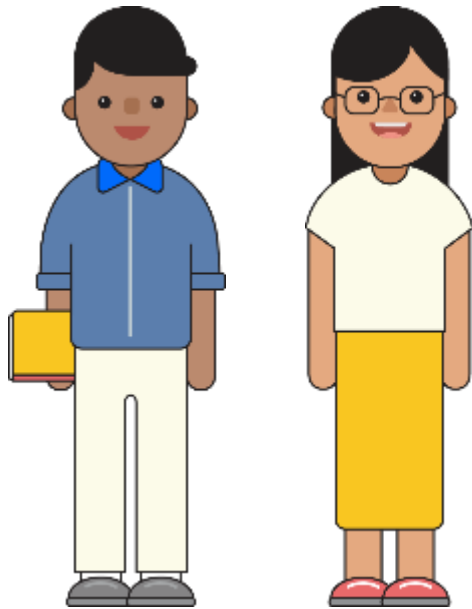
- Beyond the start of Secondary 1, students may adjust their subject levels across their secondary school journey.
  - E.g. Students can also offer English Language, Mathematics, Science and/or Mother Tongue Languages at a more demanding level from Secondary 1 Semester 2.

<b>Current subject level</b>	<b>School-based results</b>	<b>Option to offer subject at</b>
G1	≥75% in the specific subject	G2 starting from next semester
G2	≥75% in the specific subject	G3 starting from next semester

# Subject Level Flexibility Throughout Secondary Education

- In upper secondary, students may offer **elective subjects** (e.g. Additional Mathematics, Art, Design & Technology) at a subject level suited to their strengths, interests and post-secondary aspirations.

# Greater Subject Level Flexibility



"I do see that students actually blossom when they are confident and aware of their strengths. Students taking a subject at a more demanding level **no longer view themselves by their academic stream but take pride in their strengths in a particular subject.**"

*Sec 1 Form Teacher*

"Full SBB **provides opportunities for students** to take subjects at more demanding level and blurs the lines between the academic streams. **When they are offered to take a subject at a more demanding level, they take a lot more pride in the subject.** They may even work harder than the rest in the class."

*Sec 1 Form Teacher*

*\*Quotes from Full SBB pilot study FGD in Q3 2020. Slight edits were made for clarity and personal identifiers have been anonymised.*

# Secondary 1 Subject Offerings

<b>Examinable subjects</b>
English Language
Mathematics
Science
Mother Tongue Languages
Humanities Subjects
Art
Design & Technology
Food & Consumer Education
<b>Non-examinable subjects</b>
Music
Physical Education
Character & Citizenship Education



# Progression to Secondary 2

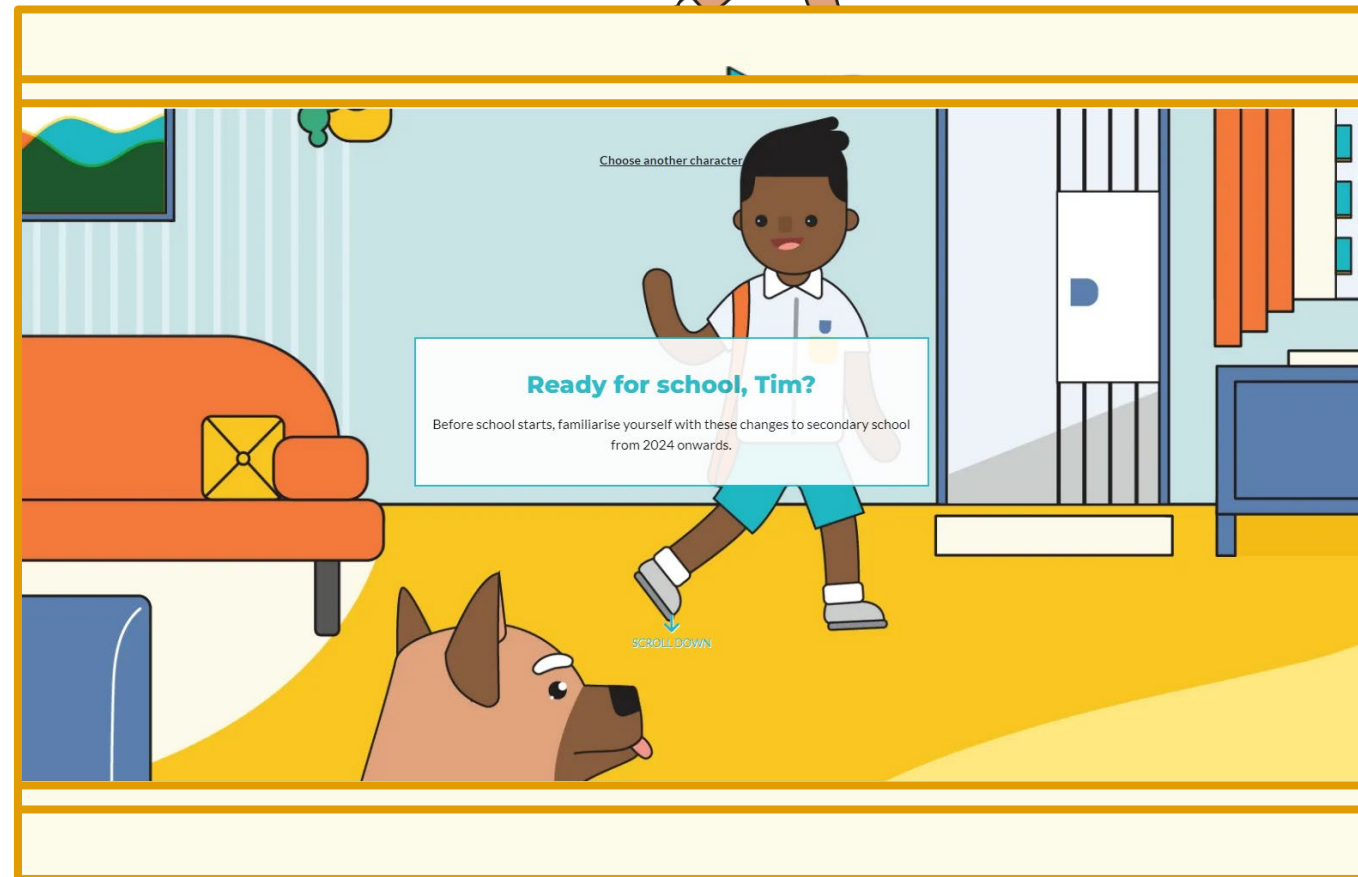
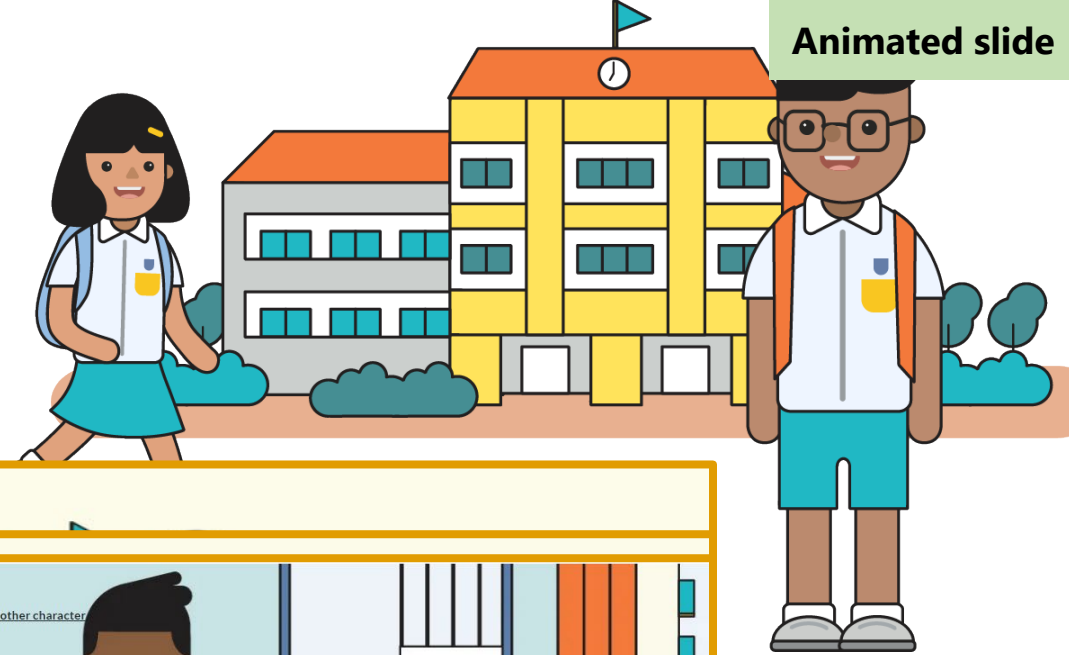
- All students will generally progress to Secondary 2.
  - Teachers will check in with students and parents to discuss the subjects and respective subject levels that best suit the student.
- Students can offer certain subjects at a more demanding level based on his/her interest and learning progress.



# Interactive Site: Where will your path lead?

<https://go.gov.sg/my-fsbb-path>

Find out each student's unique Full SBB experience through this interactive site.



# What's next?



Secondary 1 & 2

End of Secondary 2

Secondary 3 & 4

## Deciding on upper secondary subject combinations

All students will offer between 5 and 9 examinable subjects for upper secondary.

## Upper secondary

Students will continue to have flexibility to offer subjects at different subject levels, including elective subjects.

# What's next?

## End of Secondary 4/5

### Singapore-Cambridge Secondary Education Certificate (SEC) Examination

From 2027, students will sit for the new SEC examinations, with different papers for each subject level.

5<sup>th</sup> year of secondary education will continue to be available for eligible students.

- This allows them to pace their learning and possibly offer subjects at a more demanding level to access more post-secondary pathways.

## Post-Secondary

### Admission to post-secondary education institutes

Admission criteria have been progressively updated to recognise students taking different combinations of subjects and subject levels.

- E.g., Polytechnic Foundation Programme (PFP) has been expanded to allow access to students offering G3 subjects, or a mix of G2 and G3 subjects.



**Thank you**