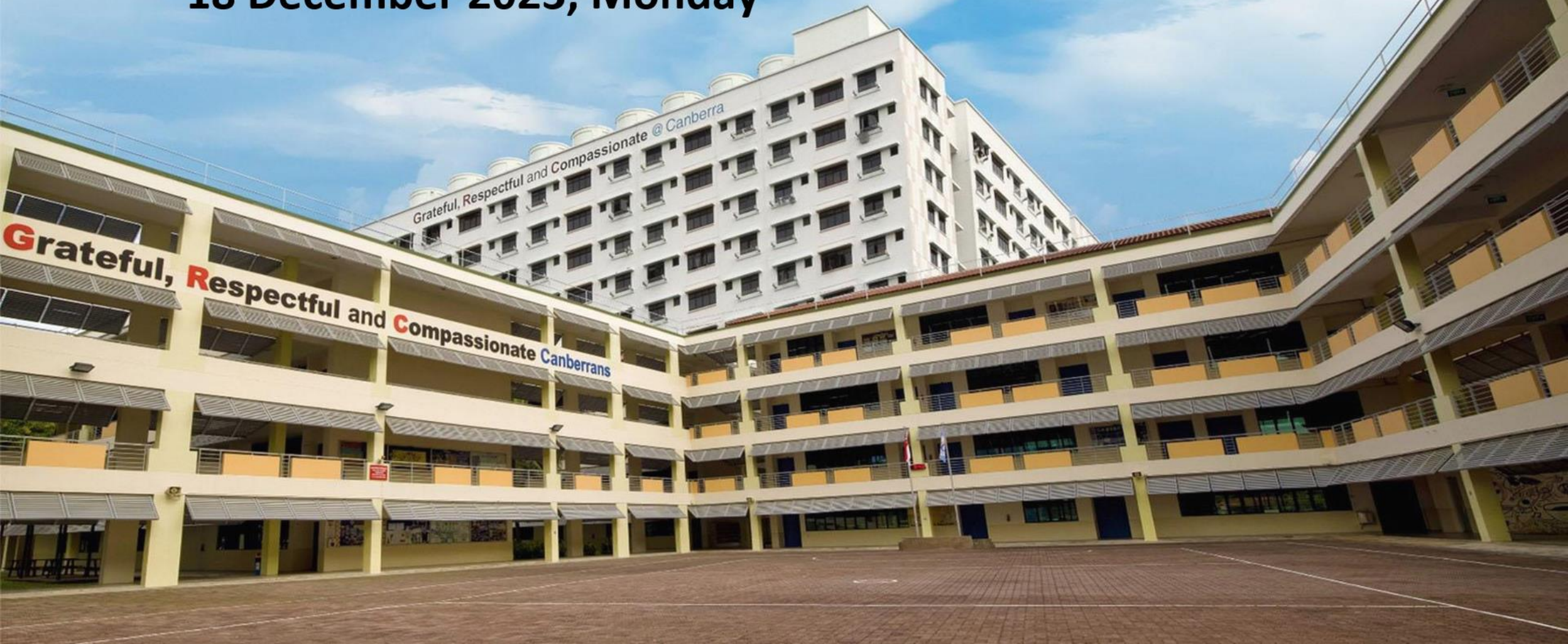


CANBERRA SECONDARY SCHOOL

GCE N Level Examination Results Release
18 December 2023, Monday



Programme

- **Address** by Principal, Mr Leong Kok Kee
- **Administrative Briefing** by Year Head
- **Sharing of Result Analysis** by Year Head
- **Release of GCE N Level Examination Results** by Character Coaches



Principal's Address

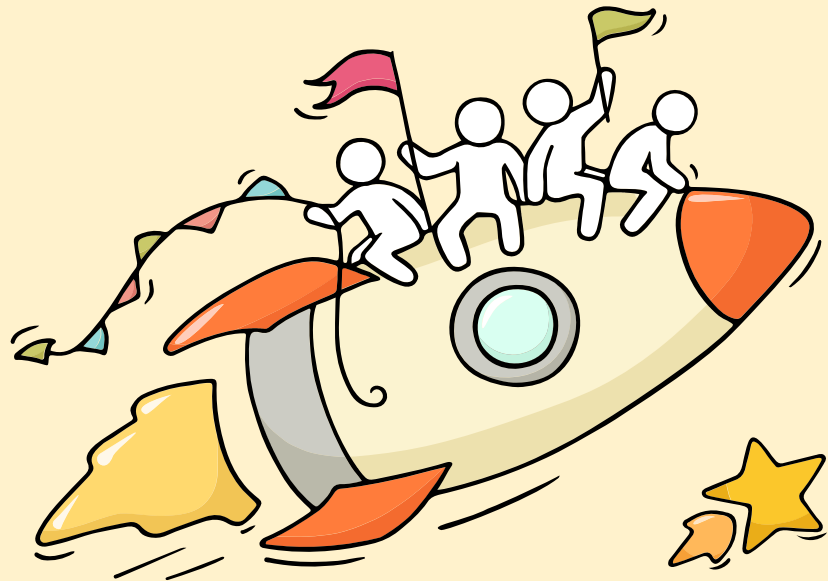
Welcome Back!

Briefing Slides for Release of 2023 N-Level Results



Dear students,

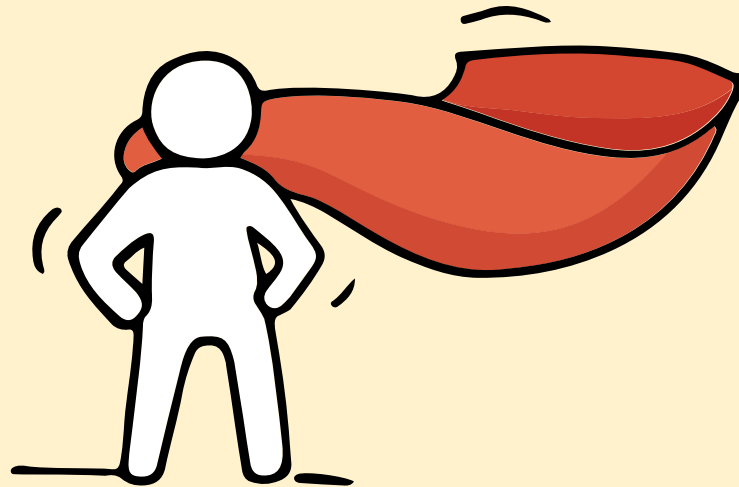
You have worked hard to reach this stage. Let's celebrate your efforts!



Finally, we are going to get our results!



Remember that while **everyone's educational journey is different, we can each have a fulfilling outcome!**



Thinking about Your Next Step?

Consider these questions!

Where do I want to go?

Who am
I?



How Do
I Get
There?

Resources to help you make informed decisions



MySkillsFuture Student Portal

A one-stop portal that empowers you to embark on a journey of self-discovery and make informed education and career choices.

Use the information and tools to explore various education and career pathways and take charge of your future.

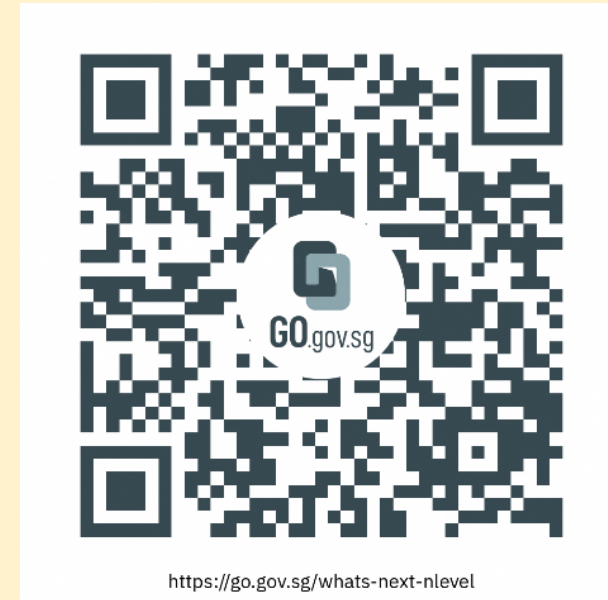
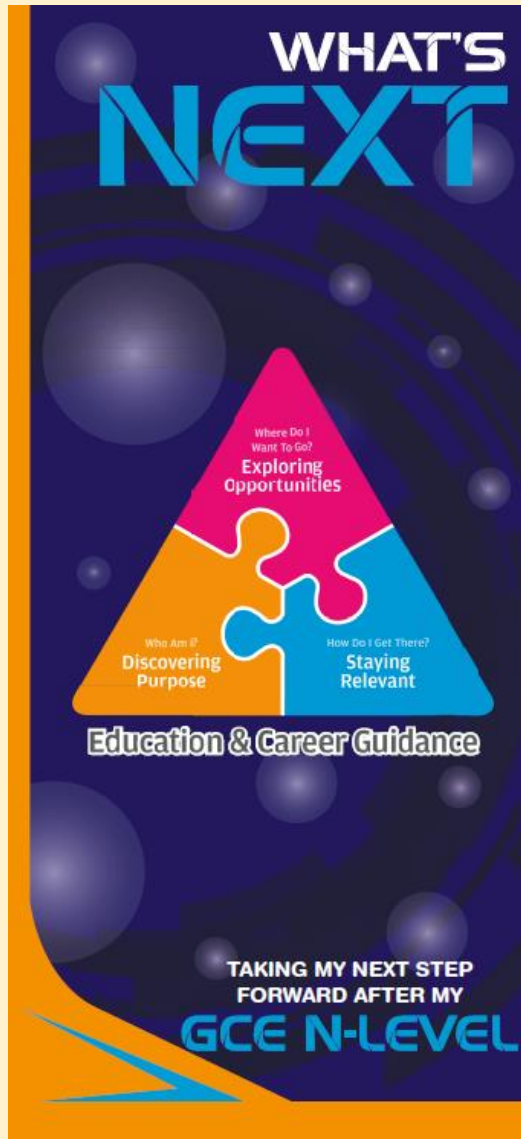
Where can we find more information?



<https://go.gov.sg/mySFsec>



Resources to help you make informed decisions



<https://go.gov.sg/whats-next-nlevel>

Resources to help you make informed decisions

Post-Secondary Education

Learn more about the admissions exercises and programmes



<https://moe.gov.sg/post-secondary/admissions>

Learn more about the post-secondary education institutions



<https://moe.gov.sg/post-secondary/overview>

Resources to help you make informed decisions

Explore different jobs and industries with On My Way (OMW). Find out if your career goal and educational pathway match your interests, values and ambitions. <https://www.nyc.gov.sg/omw/home>



KNOW IT ALL

provides consolidated information about different jobs and industries - key responsibilities, skills, career paths and more!



DAY IN THE LIFE

takes you into the lives of different professionals and give you a glimpse of their jobs and what it entails through the medium of videos.



TASTER PROGRAMMES

are micro-experiences of different job roles that allow you to get a taste of working life and help you decide what to study to achieve your career aspirations!



Concerned about your next steps?

Stop

- Calm yourself down. Take a few deep breaths.

Think

- Think through the different options that are available for you. Keep things in perspective.
- Remember that the N-Level is one part of your life journey and not the destination.

Do

- Approach a trusted adult and seek his/her help. Have a conversation with this person about what would be best for you.
- Make a decision and take action based on your options.

When you receive your results, you may experience a range of emotions.

Managing these emotions well will allow you to stay calm and make rational decisions.

Reaching out for help is a sign of strength, not weakness.

If you have any questions about your options or are not coping well, do reach out to someone you trust and speak with them. It could be a parent/guardian, teacher, ECG Counsellor, School Counsellor or a friend that you can talk to.

*Is there
someone we
can speak
with?*



Support is readily available for you.

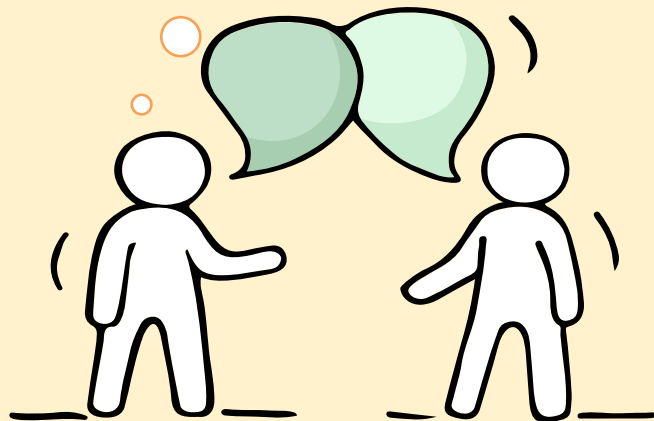
Reach out to an ECG Counsellor!

*Who can we go
to for ECG
advice?*

Make an appointment to speak with
your ECG Counsellor in school.

OR

Make an ECG counselling
appointment via the ECG Centre @
MOE (Grange Road) at
<https://go.gov.sg/moe-ecg-centre>



Keep a lookout for some of these signs in your peers or in yourself

How can we support one another?



D

Deliberately avoiding others

I

Increased irritability, restlessness, agitation, stress and anxiety

S

Sending or posting moody messages on social media

T

Talking about death or dying

R

Reacting differently or gradually losing interest in things they used to like

E

Eating more than usual or having a much reduced appetite

S

Sleep pattern changes with difficulty falling asleep or oversleeping

S

Slowing down of energy levels

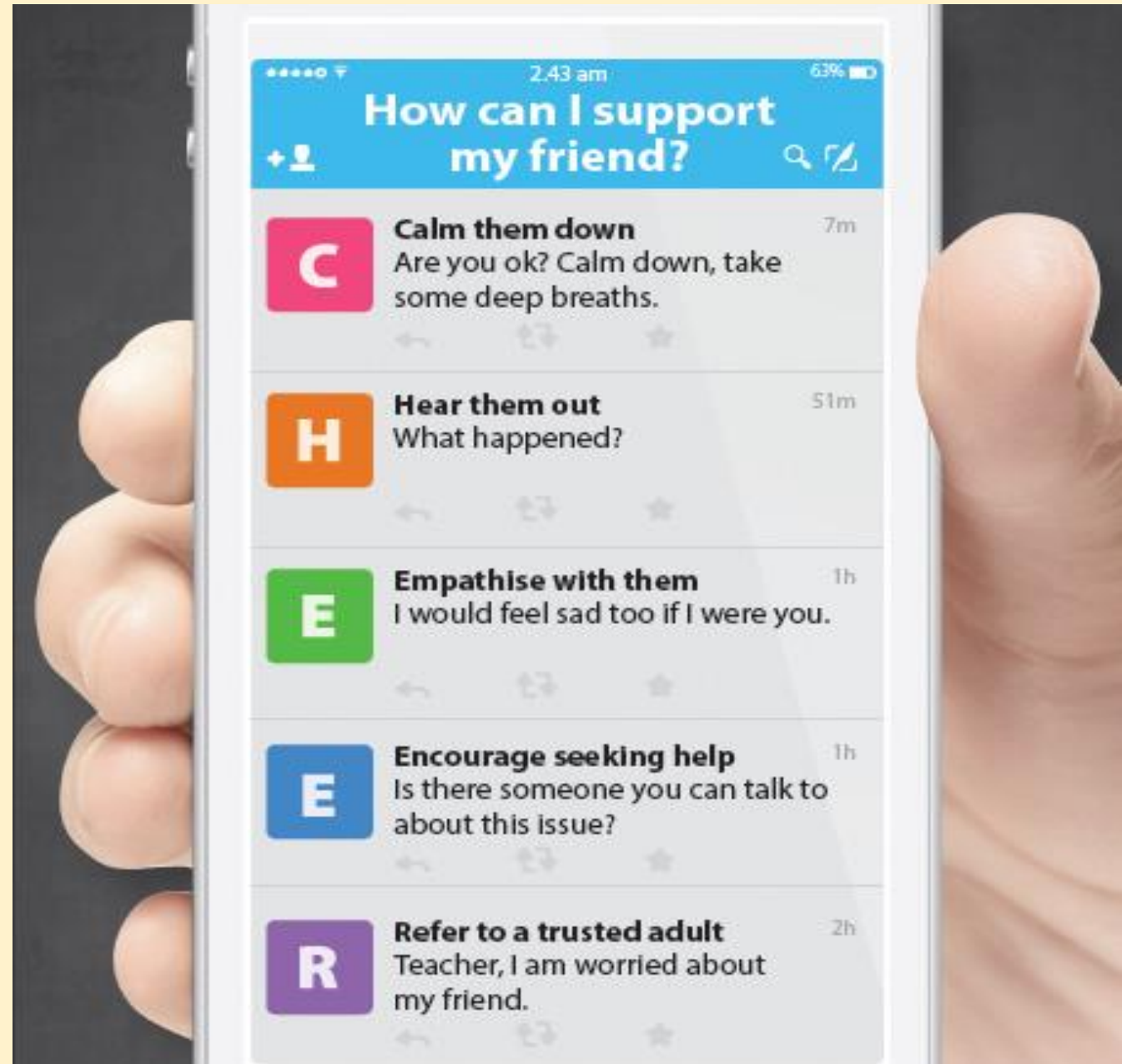
If you notice any of these signs in yourself or your friends,
have a chat with your school counsellor or teacher
Or contact SOS 24-hour hotline at **1-767** or **1800-221-4444**



Keep a lookout for your friends in distress. You can support them in the following ways:

Supporting Your Friend

We may each experience different emotions upon receiving the results. You can share your friends' joy by congratulating them or give words of encouragement to friends who may be disappointed with their results.



Support is readily available for you.

There are other hotlines and chats available if you are more comfortable seeking help using these platforms. Scan the QR code below for a helpful resource.



SOS provides round-the-clock emotional support for those in distress, thinking of suicide or affected by suicide.

Call: **1767**
(24-hour helpline)

Whatsapp: **9151 1767**
(24-hour Care Text)

TOUCHline is a helpline to provide youths with emotional support and practical advice.

Call: **1800-377 2252**

*Monday- Friday (Excluding Public Holidays):
9am – 6pm*

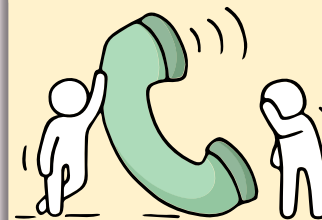
Community Health Assessment Team (CHAT)

provides personalised and confidential mental health checks and consultation for youths. To speak with a youth support worker, you can:

Visit: **CHAT Hub at *SCAPE, #05-05**
Call: **6493 6500/ 6501**
Email: **CHAT@mentalhealth.sg**

Carey is an online platform by Care Corner that provides free mental health check-ins with mental health professionals. Find out more at:
<https://carey.carecorner.org.sg/>

mindline.sg is an online platform that provides tools, tips and resources to help you manage your health and well-being. Find out more at:
www.mindline.sg



ec2 is an e-Counselling Centre where you can talk to a trained counsellor about the issues you are facing, right where you are.

Chat with a counsellor at:
www.ec2.sg

*Monday – Friday (Excluding Public Holidays):
10am – 12pm & 2pm – 5pm*



**The N-Level
examination is not
the destination.**

**It is part of your
education journey.**

Admissions Exercises Application Timeline

(N-Level Results)

December

- JIE 'N'
- JIE 'E'
- DPP
- NFP

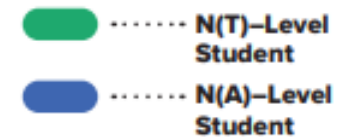
(Start of 2-year *NITEC* and 3-year *Higher Nitec*)

January

- PFP
 - DPP
- (2nd window of applications)

(Start of Polytechnic and 2-year *Higher Nitec* Term)

April



Administrative Briefing

By Year Head

Application for Institute of Technical Education (ITE) courses

- Candidates who wish to apply for courses offered by the Institute of Technical Education (ITE) can submit their applications online via the ITE application portal (<https://www.ite.edu.sg/apply-for-ITE-courses>), between 2.30pm on Monday, 18 December 2023 and 5.00pm on Thursday, 21 December 2023.
- Hard copy application forms will also be available at the Customer & Visitor Centres at the three ITE Colleges. Applicants who wish to collect hard copy applications from the Customer & Visitor Centres should book an appointment first by contacting the respective colleges via the email addresses or phone numbers provided at <https://www.ite.edu.sg/who-weare/get-in-touch>.

Application for Institute of Technical Education (ITE) courses

- For courses offered under Aptitude-Based Admissions, candidates may check the interview details online via the ITE application portal from 2.00pm on Friday, 22 December 2023.

Release of ITE Posting Results and Acceptance of ITE Offers

- The ITE posting results will be released at 9.00am on Friday, 29 December 2023. Candidates may check the posting results online via the ITE application portal.
- Candidates who receive an ITE offer should log on to the ITE application portal between 9.00am on Friday, 29 December 2023 and 11.59pm on Wednesday, 3 January 2024 to accept or reject the offer.

Application for the Direct-Entry-Scheme to Polytechnic Programme (DPP)

- The Direct-Entry-Scheme to Polytechnic Programme (DPP) prepares candidates for progression into selected polytechnic diploma courses via a two-year Higher Nitec course at ITE.
- Under the DPP, candidates who successfully complete their Higher Nitec course and attain the required minimum qualifying Higher Nitec Grade Point Average are guaranteed a place in a polytechnic diploma course mapped to their Higher Nitec course.
- School candidates eligible for the DPP will receive a copy of Form N from their secondary schools, inviting them to apply for the DPP.
- Applications for the DPP can be submitted online via the ITE application portal between 2.30pm on Monday, 18 December 2023 and 5.00pm on Thursday, 21 December 2023.

Application for the Direct-Entry-Scheme to Polytechnic Programme (DPP)

- The DPP posting results will be released at 2.00pm on Friday, 22 December 2023. Candidates may check the posting results online via the ITE application portal.
- Candidates who receive a DPP offer should log on to the ITE application portal between 2.00pm on Friday, 22 December 2023 and 11.59pm on Wednesday, 27 December 2023 to accept or reject the DPP offer.
- School candidates who do not have a confirmed place in the DPP should report to their secondary schools in 2024 for Secondary 5.

Application for Polytechnic Foundation Programme (PFP)

- The Polytechnic Foundation Programme (PFP) is a diploma-specific foundation programme conducted over two academic semesters at the polytechnics. It caters to school candidates in the Secondary 4 N(A) course in 2023 who have decided to pursue a polytechnic education and meet the PFP eligibility requirements at the end of Secondary 4.
- School candidates interested in applying for the PFP should first report to their secondary schools in 2024 to start their Secondary 5 year, while awaiting notification of eligibility and confirmation of a place in the PFP.
- Applications for the PFP will open in January 2024, on the day of the GCE Ordinary-Level (O-Level) Examinations results release. Candidates eligible for the PFP will receive a copy of Form P on the same day, inviting them to apply for the PFP.

For further information

You may go to following website to find more details:

For ITE:

- <https://www.ite.edu.sg/apply-for-ITE-courses>

For more information on DPP and PFP:

- Direct-Entry-Scheme to Polytechnic Programme (DPP)
<https://www.ite.edu.sg/admissions/full-time-courses/higher-nitec-dpp>
- Polytechnic Foundation Programme (PFP)
<https://pfp.polytechnic.edu.sg/PFP/index.html>

JUST-IN-TIME INFORMATION on JIE APPLICATION (Jan 2024 intake) For N(A)* and N(T) School Leavers

*Applicable for N(A) students progressing to ITE

Briefing Slides for Students

Key Dates for Jan 2024 Intake Exercise (Full-time Nitec Courses)

Key Activity	Period for 2-Year and 3-Year Nitec Courses, and 3-Year and 4-year Higher Nitec courses	Remarks
1st Phase (Main Phase)		
Application	18 Dec 2023 (2.30pm) to 21 Dec 2023 (5pm)	Apply through the Internet at https://www.ite.edu.sg with NRIC / FIN and Date of Birth. You may also apply using SingPass.
Release of Results	29 Dec 2023 at 9am	Check results at https://istudent.ite.edu.sg with web ID and password
Acceptance of Course Offer Period	29 Dec 2023 to 3 Jan 2024	Accept course offer at https://istudent.ite.edu.sg with web ID and password
2nd Phase (Late Application/Appeal Phase)		
Application	29 Dec 2023 to 3 Jan 2024	Apply through the Internet at https://istudent.ite.edu.sg with NRIC / FIN and Date of Birth. You may also apply using SingPass.
Release of Results	10 Jan 2024 at 9am	Check results at https://istudent.ite.edu.sg with web ID and password
Acceptance of Course Offer Period	10 Jan 2024 to 12 Jan 2024	Accept course offer at https://istudent.ite.edu.sg with web ID and password
3rd Phase (Final Top-up Phase)		
Application	1 st Top-up Phase Application - 10 Jan to 18 Jan 2024 2 nd Top-up Phase Application - 24 Jan to 7 Feb 2024	Apply through the Internet at https://istudent.ite.edu.sg with NRIC / FIN and Date of Birth. You may also apply using SingPass.
Release of Results	1 st Top-up Phase - 15 Jan to 24 Jan 2024 2 nd Top-up Phase - 24 Jan to 14 Feb 2024	Check results at https://istudent.ite.edu.sg with web ID and password
Acceptance of Course Offer Period	1 st Top-up Phase - 15 Jan to 24 Jan 2024 2 nd Top-up Phase - 24 Jan to 14 Feb 2024	Accept course offer at https://istudent.ite.edu.sg with web ID and password
Jan 2024 Intake Term Commencement Date: 8 Jan 2024		

Information For Students on Key Dates for Jan 2024 intake

1. All N(A)*/N(T) school leavers are encouraged to put in an application during the **1st Phase (Main Phase)** between **18 Dec 2023 (2.30pm) to 21 Dec 2023 (5pm)**. Application results for the 1st Phase will be released on **29 Dec 2023 at 9am**.
2. If you wish to appeal, please accept the course offered **before** applying in the **2nd Phase (Late Application/Appeal Phase)** between **29 Dec 2023 to 3 Jan 2024**. The application results for the 2nd Phase will be known on **10 Jan 2024 at 9am**.
3. Unsuccessful applicants can appeal under the **3rd Phase (Final Top-up Phase)** between **10 Jan to 18 Jan 2024 and 24 Jan to 7 Feb 2024** for courses with vacancies. The application results for the 3rd Phase will be known between **15 Jan to 24 Jan 2024** and **24 Jan to 14 Feb 2024**.

*N(A) students progressing to ITE

Key Pointers for Students on ITE's Joint Intake Exercise (JIE) for Admission to Nitec Courses

ALL N(T) students and N(A) students (who are not progressing to 5N(A) or repeating 4N(A)) are eligible for JIE.

Keen competition for Nitec and Higher Nitec courses, so use all 12 choices wisely!

Participation in Main Phase is key to secure a place in ITE!

If you are keen in the work & learn option, you may consider applying for the ITE Traineeship programme. Do apply in the Main Phase to avoid missing a place in ITE!

If you are unsuccessful in EAE, make sure you apply in Main Phase to avoid missing a place!

If you have received an additional letter, then you are eligible for the Enhanced Foundation Programme

If you are eligible for EFP, make sure you apply for the 2-year Nitec and 3-year Higher Nitec first before applying for EFP!




The EFP helps to build the necessary literacy and numeracy foundations that will enable you to successfully complete your Nitec course!

If you are counter-offered a course, accept it first before appealing for another course you may be more interested in!

Checking of Posting Results/Accept Course Offer

2-Year Nitec and 3-Year Higher Nitec Courses

**3-Year Nitec/4-year Higher Nitec Course with EFP
(for N(T) courses with 0, 1 pass)**

1. Go to https://www.ite.edu.sg .	
2. Click  icon.	
3. Under JIE 'N', click  icon to link to the application website	Under JIE 'E', click  icon to link to the application website
4. At the application website: <ul style="list-style-type: none">a) Enter NRIC / FIN and Date of Birth to start application. You may also apply using SingPass.b) Upon completion of application, applicants will receive their web ID and password.	

*Students who are eligible for the 3-Year Nitec/4-Year Higher Nitec Course with EFP are encouraged to go through **both** JIE 'E' and JIE 'N' e-application process

Checking of Posting Results/Accept Course Offer

**2-Year Nitec and 3-Year
Higher Nitec Courses**

**3-Year Nitec/4-year Higher Nitec Course
with EFP(for N(T) courses with 0, 1 pass)**

1. Go to <https://istudent.ite.edu.sg>.
2. Enter **web ID** and password.
3. Click '**Self-Service**' followed by '**Student Admission**' followed by '**View Application Results**' to view the application results and to accept course offer.

Additional Information For Students

Should you require further advice or assistance in your applications or future plans, please contact your teachers and ECG Counsellor.

For further inquiries, you may refer to the following hotlines and links for more information and advice on further education:

Institute of Technical Education (ITE)

ITE Hotline
(for ITE admissions and courses)

1800 2222 111
training@ite.edu.sg

Education and Career Guidance (ECG)

ECG Centre @ MOE

6831 1420
[MOE ECG@moe.gov.sg](mailto:MOE_ECG@moe.gov.sg)
e-Appointment: <https://go.gov.sg/moe-ecg-centre>

Additional Information For Students

The information listed in the table below will help you to make an informed decision on which choice of courses you could consider applying at ITE.

S/N	Information	Attachment/Link
1	ITE Course Booklet 2024	https://for.edu.sg/ite-course-booklet-2024
2	ITE Traineeship Courses	https://www.ite.edu.sg/courses/traineeship-courses .
3	Information on Progression Opportunities (From <i>Nitec</i> Courses to <i>Higher Nitec</i> and Technical Diploma Courses)	https://www.ite.edu.sg/admissions/full-time-courses/nitec/progression-opportunities
4	Information on Graduate Employment Survey	https://www.ite.edu.sg/admissions/graduate-employment-survey

Admin Matters

You will receive the following:

- GCE 'N' Level Result slip & GCE 'N' Level Certificate*
- CCA Certificate*
- Form N*
- ITE Admission Booklet
- What's Next Brochure

Remember to sign on acknowledgement slip*

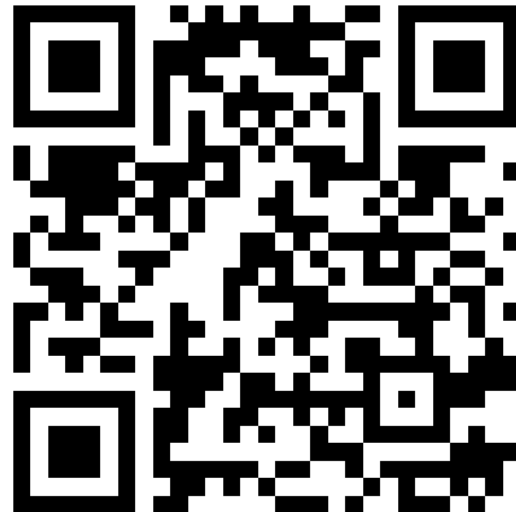
Additional Materials for N(T) School Leavers with 0 or 1 Subject Pass

1 copy of e-NFP Invitation Letter for school leaver (addressed to student)

1 copy of e-NFP Invitation Letter for parent/guardian (in multiple languages)

Admin Matters

- Students who still have outstanding fees such as school fees etc, please proceed to General Office (Mdm Soh CC) to make the payment.
- Students who are eligible for Sec 5NA are to submit an online application form via All EARS (2023 SEC 4 N LEVEL Results Response Form) by **21 Dec 2023 (Thursday), 12 noon.**



Admin Matters 4NA students

Result slips will indicate your eligibility status

- 3 possibilities:
 1. **PROMOTED**: Eligible for 5NA
(Those eligible for PFP/DPP will receive a form with a pin number)
 2. **REPEAT**: Eligible to repeat 4NA or ITE
 2. **ITE**: Eligible for Nitec and Higher Nitec (only qualified NA students)

Registration Advice

- ❖ There is **keen competition** for places in ITE *Nitec*.
- ❖ **Not participating** in the Main Application Phase **reduces students' likelihood** of gaining a place in ITE.
- ❖ Students keen to apply for the *Traineeship Scheme* should also be reminded to **concurrently participate** in the Main Application phase to avoid missing out a place in ITE altogether.
- ❖ Students need to exercise the **full 12 choices** and include less popular options to **maximise their chances of a successful posting**.
- ❖ N(A) students need to understand that they are on '**an equal footing**' with N(T) students in ITE's admission process.

School ICT Support (JIE APPLICATION)

You can use the school laptops/ iPads at the Library at the following timing:

- 19- 20 Dec (9 – 4.30 pm)
- 21 Dec (9 – 4.30 pm) ***DEADLINE***



ECG Counselling Support



Mr. Stephen Soong
ECG Counsellor
Canberra Sec Sch



<https://go.gov.sg/stephensoong>

You can reach me:

for appointment booking
<https://go.gov.sg/stephensoong>

or send an email to:
Soong_Xuan_De@schools.gov.sg



**Good Job to Our 2023 Sec 4NA/NT Students for
their Achievements in the GCE N Level Exam!**

